

Communicating With Providers

Are you **working with a Transitions PalliativeCare provider** and **need to communicate** with them?

Connect with them directly via **RAPID CONNECT** or **Epic Chat**.

Do you **need to initiate contact** with the team?

Send a message to:

CARY HOSPITAL–Palliative Medicine–Transitions LifeCare On Call or

RALEIGH AND NORTH–Palliative Medicine–Transitions LifeCare On Call via **RAPID CONNECT** and someone will reach out to you ASAP.

Advanced Practice Providers



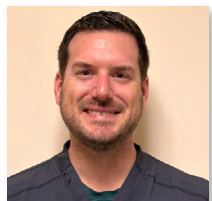
Cindy Bryan, NP



Jackie Francisco, AGNP-C



Elyse Goldberg, NP



Joshua McCullough, AGPCNP-BC



Amanda Savarese, AGNP-C



Weiwei Wang, FNP

Physicians



Rachel Lipner, DO
Chief Medical Officer



Hannah Brown, MD
Medical Director of Inpatient Palliative Care



Adam Ketner, MD
Hospice & Palliative Medicine Physician



Alyssa Luddy, MD
Hospice & Palliative Medicine Physician



Robert Rotman, MD
Hospice & Palliative Medicine Physician

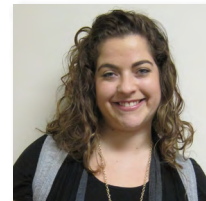


Vishal Bhuva, MD
Hospice & Palliative Medicine Physician (PRN)

Social Workers



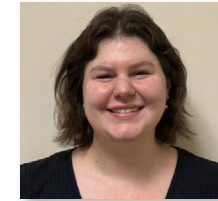
Murray Dees, MSW, LCSW



Dara Greenberg, MSW, LCSW
PC Team Lead



Lizette Lopez, MSW, LCSW



Emma Salyards, MSW, LCSWA

Nurses

Niccole Moore, LPN
Julie Ogilvie, RN
Martha Vet, RN

Referral Liaison

Niccole Moore
serving WakeMed Raleigh, WakeMed Cary, WakeMed North
Mon–Fri | 8:00am–5:00pm, cell: 919.675.4648